

DAC 600 DIRECT CHARGE DENSIFIER FOR STEEL & ALUMINUM CANS



DAC 600 Densifier with Optional Conveyor/Separator



DAC 600

DENS-A-CAN Model 600 densifier is engineered to compact aluminum and bi-metal beverage cans into high density interlocking biscuits that meet the aluminum and steel industry requirements.

Being direct charge makes the DAC 600 well suited for a surge/storage hopper, in which the DAC 600 is placed directly beneath a surge/storage hopper. The 600 may be purchased with an optional separator/conveyor.

The DAC 600 is a great money maker that requires low capital investment - priced for smaller operations.

- Cooling system standard with fittings in place for heater installation.
- Automatically adjusts for whole, mixed, or flat cans.
- Agitator system breaks up can bridging even from the largest of surge hoppers.
- Fully automatic - eliminating need for constant overseeing.
- Manual override switches for cylinder manipulation.
- Uncomplicated design with a single compression ram has few moving parts. This means minimal and low cost maintenance.
- TEFC motors and sealed electrical enclosures.
- All components are easily accessible, and wear areas are bolted for ease of service.
- Fully assembled and mounted on casters.

The Model 600 densifier is designed for the local Buy-Back Operation or municipality. No need for a flattener, or to spot a trailer! No need to send cans to a processor for bailing or shredding.

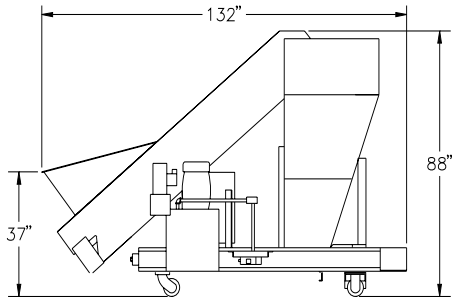
DENS-A-CAN INTERNATIONAL
DESIGNERS & MANUFACTURERS OF RECYCLING SYSTEMS and EQUIPMENT

Dens-A-Can is a registered trademark of Stanko Products, Inc.
Stanko Products, Inc./dba/Dens-A-Can, Intl.

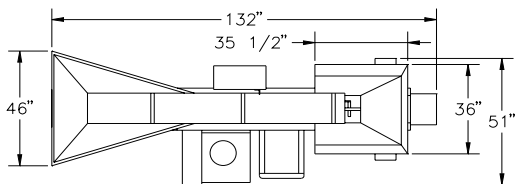
DAC 600 DIRECT CHARGE DENSIFIER

DENS-A-CAN built the first commercially operated aluminum densifier in 1981. In 1984, DENS-A-CAN engineered and marketed the original Direct Charge Densifier.

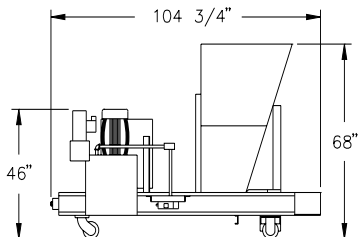
The POWERFUL DAC 600 Direct Charge densifier from DENS-A-CAN produces easy to handle, PREMIUM PRICED biscuits that meet ALCOA's specifications for aluminum beverage cans and the steel industries' specifications for the bi-metal cans.



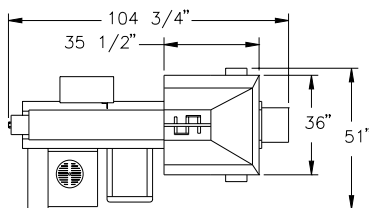
DAC 600 with Optional Conveyor - Side view



DAC 600 with Optional Conveyor - Top view



DAC 600 - Side view



DAC 600 - Top view

SPECIFICATIONS

Description:

All DENS-A-CAN densifiers feature high quality hydraulic components, advanced manifold construction and straight thread O-ring fittings to minimize leakage.

The DAC 600 is fully automatic and will run continuously as long as cans are being fed. It features an automatic shut off when empty.

Direct Charge is the processing of cans without the need for any preprocessing like pre-weighing. The DAC 600, like all DENS-A-CAN densifiers, can be placed directly beneath a surge storage system. Can bridging is eliminated by the use of an agitator. The agitator rotates when the single compression ram is retracting, the rotating agitator breaks bridging and forces the cans into the compression chamber.

The DAC 600 comes fully assembled and is mounted on casters to allow for easy clean up. After the tank is filled with oil and electricity is run to the machine, it is ready to operate! All service areas of the DAC 600 have ample access. All wear components are bolted and designed for easy replacement.

Capacity in pounds/hour:	Aluminum	Aluminum Flat	Bi-Metal
Up to:	600	800	1020

Biscuit Description:

Typical size: 8" x 10" x 11" with integral banding grooves.

Weight and density of a typical biscuit:

Aluminum cans- 20/22 lbs. each or 40/43 lbs./cu. ft. typical.

Bi-Metal cans - 35 lbs. ea or 70 lbs./cu. ft. typical.

Banded Bundle typical size and weight:

125 biscuits, 40" x 50" x 55", no skid or pallet needed.

Aluminum beverage cans - 2500 pounds

Bi-Metal cans - 4375 pounds

40' trailer will hold 18 bundles.

Standard Power: 10 HP, 240 V, 3-phase, 40 amps, or 480 V, 3-phase, 20 amps.

Options: 240 V, 1-phase, 208 V, 3-phase and 575 V, 3-phase

Other Specifications:

Mounted on casters.

Cooling system is standard.

Available with or without conveyor/magnetic head pulley.

Full control of the cylinders from the control panel in manual operation.

Approximate Weight in pounds:	Without conveyor	With conveyor
	2200	2600

Hydraulic Reservoir Capacity - 30 Gallons

Specifications to change without notice.

Shipped:FOB: Greensburg, PA

DENS-A-CAN INTERNATIONAL

DESIGNERS & MANUFACTURERS OF RECYCLING SYSTEMS and EQUIPMENT

RR 12 Box 210 Donahue Road, Greensburg, PA 15601

Phone: 724-834-8080 Fax: 724-834-8907 Email: densacan@densacan.com

Dens-A-Can is a registered trademark of Stanko Products, Inc.
Stanko Products, Inc./dba/Dens-A-Can, Intl.